



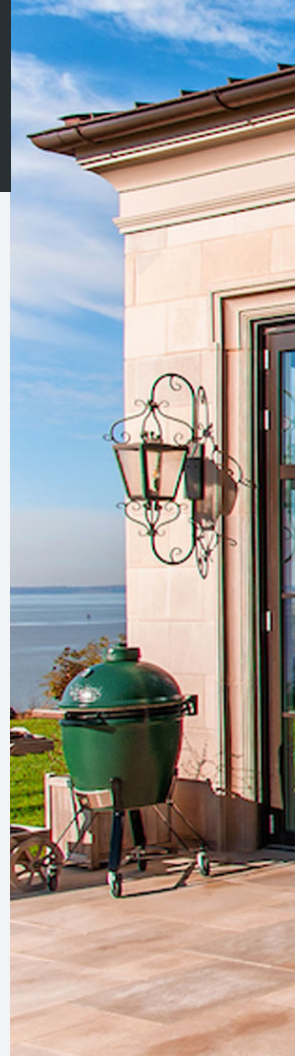
OUTDOOR CABINETS

by PREMIER

Weatherproof, Durable, Beautifully Crafted

We love to spend time outdoors. As a result our homes are expanding to include outdoor living and entertaining spaces. Function has become an important aspect of those spaces and kitchens are part of the plan.

Premier's Outdoor Cabinetry Collection is unmatched in the industry. Smartly engineered and beautifully crafted, our outdoor cabinetry boasts a waterproof, weathertight case. And, while our gasket seal insures product performance in all types of weather, our selection of wood, metal, and powercoat options provide a style choice for every client.





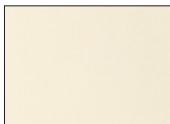


POWDERCOAT & WOOD OPTIONS

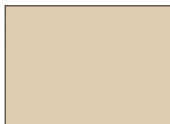
In addition to our standard offering, other powdercoat and wood colors are available.



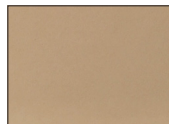
Sky White



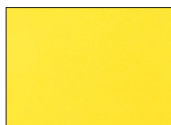
Peanut



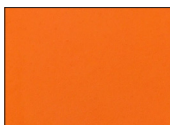
Almond



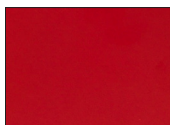
Hazelnut



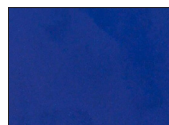
Safety Yellow



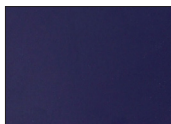
Pumpkin



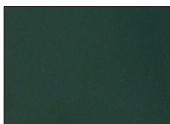
Chili Pepper



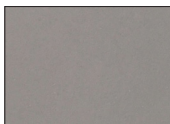
Sapphire



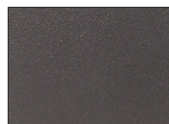
Twilight



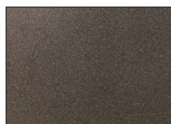
Forrest



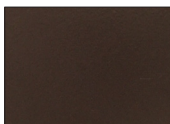
Keystone Gray



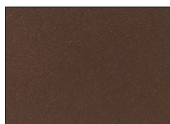
Storm Gray



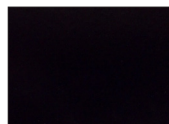
Mineral Bronze



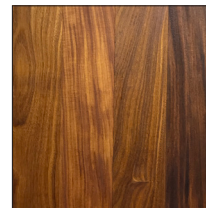
Roman Bronze



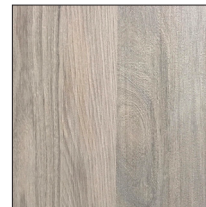
Chestnut Texture



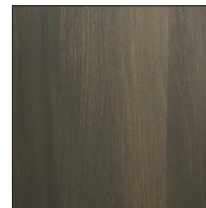
Semi-gloss black



African Teak Natural



African Teak White Wash



African Teak Driftwood





DOOR STYLES

Both stainless steel and wood door styles are available. Steel doors are available in a powdercoat finish.



Standard Stainless



Framed Louver



Framed Flat-Center



Mirror Slant Trim



Framed Plank



Framed Louver



Plank

FEATURES

High-performance cabinetry includes features and interior options not found in other outdoor products. Here are just a few of the things that set us apart.



Gasket Seal

Like a car door, the gasket keeps the cabinet interior completely dry and free from insects and other outdoor pests.



Integrated Outlets

Duplex outlet box with a gasket seal cover is available. Outlet is installed on 4" wide end panels.



Pivot Hinge

A high quality, stainless steel pivot hinge allows the door to swing freely, opening to 180°.



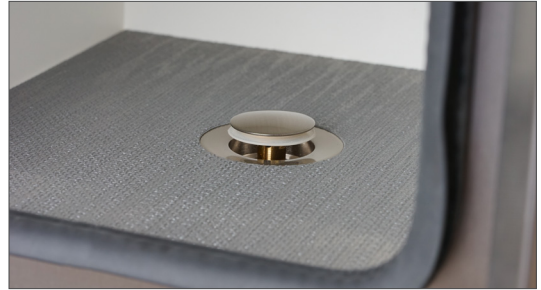
Leveling Leg

An adjustable leveling leg and swivel foot allows for easy installation on stone and other uneven surfaces.



Earth Magnet

A high-powered Earth Magnet keeps doors and drawers tightly closed to ensure a completely watertight seal.



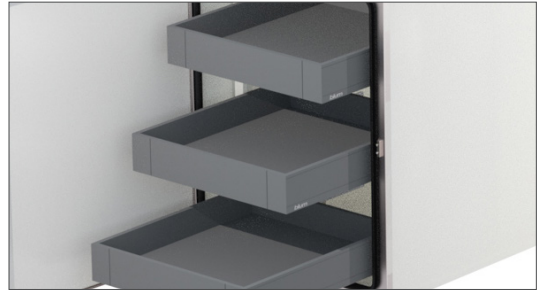
Floor Drain

A push-to-open floor drain is a modification that can be made to your cabinet. The drain sits flush when closed.



Propane Storage

Mounted on full-extension heavy duty drawer slides, the propane tank is secure, easily accessible, and beautifully concealed.



Roll-out Shelf

Roll-out shelves consist of a powdercoat metal drawer box on full extension, soft close, under mount drawer track.

MATERIAL COMBINATIONS AND TEXTURES

Material combinations are one of the details that set Premier Outdoor Cabinetry apart from other products. Wood and stainless, wood and powdercoat, brushed and polished metal are all stunning design options.



Textured Powdercoat

Textured powdercoat colors include Chestnut and Storm Gray. Available on all stainless and wood framed doors, this fine texture with matte finish creates an elegant look.

Above left: Storm Gray and African Teak Natural; Above right: Chestnut and African Teak White Wash



Polished and Brush Stainless Combination

A slant edge detail in polished stainless steel, brings a sophisticated sparkle to this door and drawer style. Creating subtle contrast is the brushed stainless steel center panel.







WHY YOU'LL LOVE PREMIER OUTDOOR CABINETRY

SO MANY SOLUTIONS

Pre-engineered products are ready to order right out of the book. Choose from our standard cabinet sizes, wood, stainless or powdercoat finishes, and various door options to create unlimited combinations of style and design. And of course, in the tradition of Premier, we can always do custom cabinetry!

SMARTLY ENGINEERED

Materials and design combine to create a one-of-a-kind cabinet. A waterproof thermoplastic cabinet case is married to a stainless-steel face frame. The frame includes a continuous gasket and when the door is closed, it creates a watertight seal. The result is a product that is watertight, weatherproof, insect and varmint proof, easy to clean and resistant to physical abuse. Driving wind and rain - no problem!

STATE-OF-THE-ART-MATERIALS

Stainless Steel, Powdercoat Colors and Textures, various Wood Species, and a variety of Stainless Steel Decorative Hardware options are included as design choices offered by Premier.

SPECIALTY CABINETS

It's not just about the grill any more. Today's outdoor kitchens also incorporate power burners, warming drawers, and even a microwave. For spaces that don't have natural gas, we have a specially designed propane tank cabinet. With solutions for all your appliance and component needs, our cabinetry is the perfect choice.

BEAUTIFULLY MADE AND DURABLE

Crafted in the tradition of fine cabinet making, Premier's Outdoor Cabinet Collection brings a sophistication and performance that is unmatched in the industry, while meeting the demands of an outside environment.

PREMIER FEATURES

- Weatherproof Case
- Gasket Seal
- Soft Close Drawer
- Metal Drawer Box
- Adjustable Leveling Leg
- Swivel Foot
- Pop-up Drain
- Interior Accesories
- Integrated Outlets
- Various Door Styles
- Stainless & Wood Doors
- Powdercoat Colors
- Specialty Cabinets
- Custom Sizes







110 Short Street New Holland, PA 17557 717-354-3059 premiercb.com/outdoor